

# أهجر الدنيا

Á

Á Á ÁK Á

1

1: Track 1

6

1: Track 1

10

1: Track 1

14

1: Track 1

16

1: Track 1

18

1: Track 1

*End 1*

21

1: Track 1

23

1: Track 1

26  
1:  
Track 1

Musical staff for measure 26, starting with a treble clef and a key signature of one flat. The staff contains a sequence of eighth and quarter notes.

29  
1:  
Track 1

Musical staff for measure 29, continuing the melodic line with eighth and quarter notes.

32  
1:  
Track 1

Musical staff for measure 32, featuring a triplet of eighth notes marked with a '3' above the staff.

34  
1:  
Track 1

Musical staff for measure 34, showing a continuation of the eighth-note pattern.

36  
1:  
Track 1

Musical staff for measure 36, including a double bar line and a second measure indicated by a '2' below the staff.

38  
1:  
Track 1

Musical staff for measure 38, ending with a double bar line and the text 'End 2' and 'To 1' below the staff.

40  
1:  
Track 1

Musical staff for measure 40, continuing the eighth-note melodic line.

43  
1:  
Track 1

Musical staff for measure 43, featuring a sequence of eighth notes.

47  
1:  
Track 1

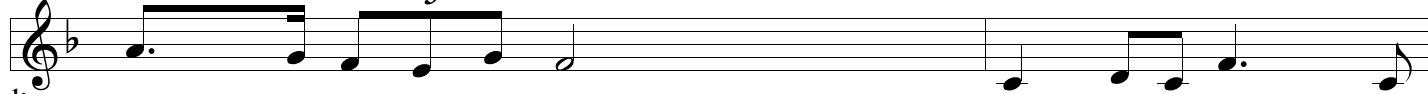
Musical staff for measure 47, including a sharp sign (#) and a fermata over a note.

52



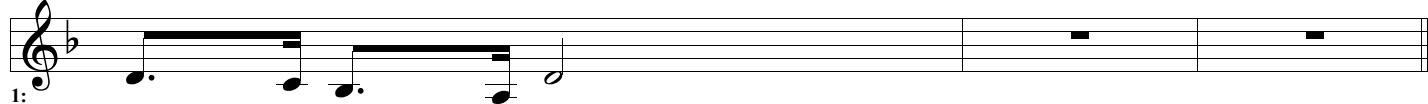
1:  
Track 1

55



1:  
Track 1

57



1:  
Track 1

*To 2**To 1*